

Social Hall Floor Plan

Contact:

Event Date:

Start Time:

Equipment Available

23 Round 60" Table (seats 8 – 10 people)

8 Round 46" Table (seats 6 – 8 people)

10 Rectangular 8' Table

5 Rectangular 6' Table

230 Banquet Chair

2 Baby Grand Piano

AV System, Projector Screen

Coffee Machine (filters not provided)

2 High Chairs

Equipment Requested (#)

___ Round 60" Table (seats 8 – 10 people)

___ Round 46" Table (seats 6 – 8 people)

___ Rectangular 8' Table

___ Rectangular 6' Table

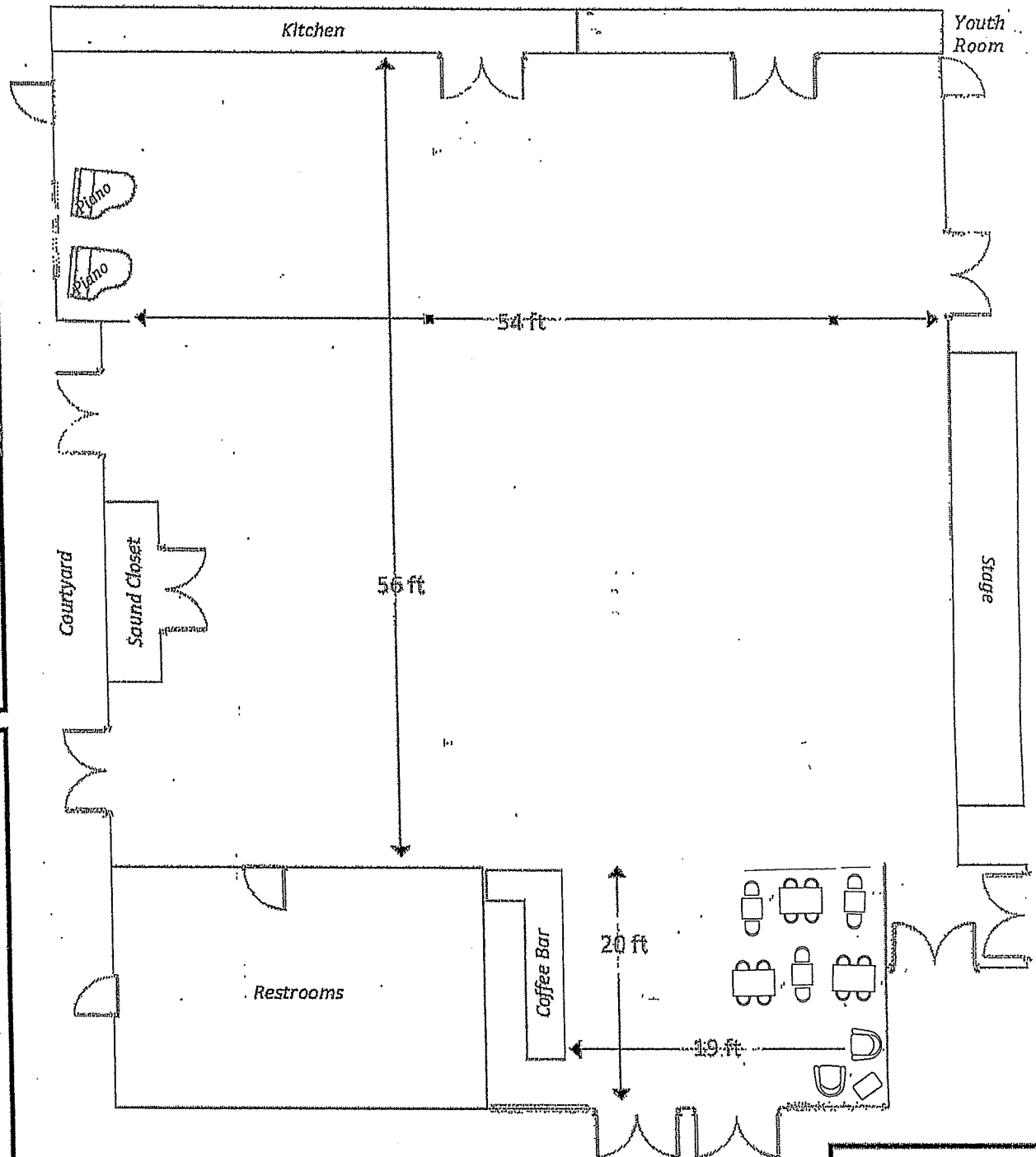
___ Banquet Chair

___ Baby Grand Piano (2 available)

___ AV System, ___ Projector Screen

___ Coffee Machine (filters not provided)

___ High Chairs



Maximum Seating: 230
Maximum Standing: 350